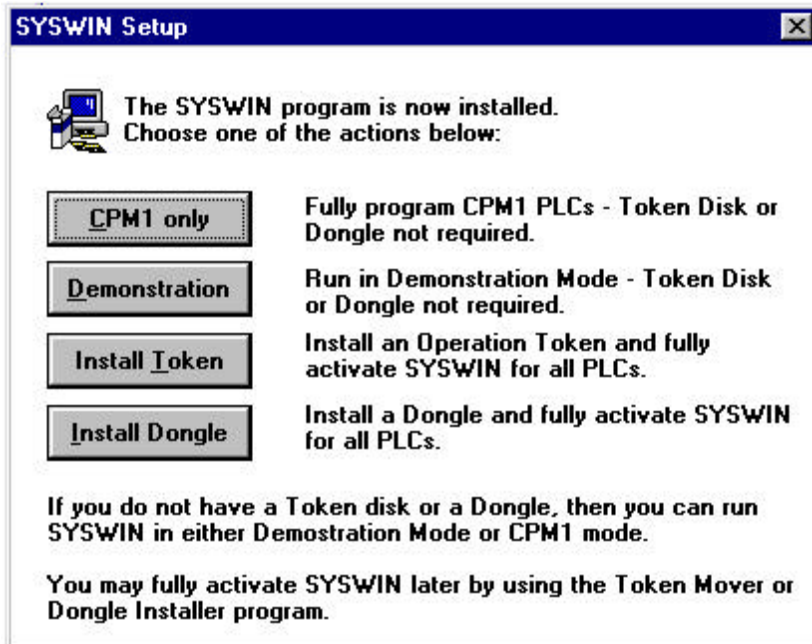


Installing Syswin 3.2 with a Dongle on a Windows NT® System

Written by Jay Hughes

1. Syswin must be installed on a DOS partition of Windows NT, not an NTFS partition.
2. The user must be logged into Windows NT with administrative privileges.
3. Install Syswin normally. When the following screen appears, choose “**Demonstration**”.



4. Using the Windows NT Explorer, locate the file named SYSWIN.INI in the WINNT directory.
5. Double click on that file to edit it. The beginning of the file will look similar to the following:

```
[Setup]
CPM1OnlyMode=0
Current=0,0,1,0,0
Project=
Placement=0,1,-1,-1,-1,-1,195,87,963,624
Safety=0
AutoConnect=0
```

NOTE: Your installation may not look exactly like this. That is OK. Do not modify anything other than what is noted below.

6. Add the "CheckDongle=1" line below the [SETUP] as follows.

```
[Setup]
CheckDongle=1
CPM1OnlyMode=0
Current=0,0,1,0,0
Project=
Placement=0,1,-1,-1,-1,-1,195,87,963,624
Safety=0
AutoConnect=0
```

7. Save the SYSWIN.INI file and close the editor that you are using.
8. From a DOS prompt in WinNT, go to the directory where the Dongle drivers are located. *EX. C:\Syswin32\dongle.*
9. Type **HLINST -d** <ENTER> This removes any previous Dongle drivers loaded.
10. Type **HLINST .** <ENTER> This installs the new driver. (Notice the period in the command line! This is important!)
11. The installation is now complete.